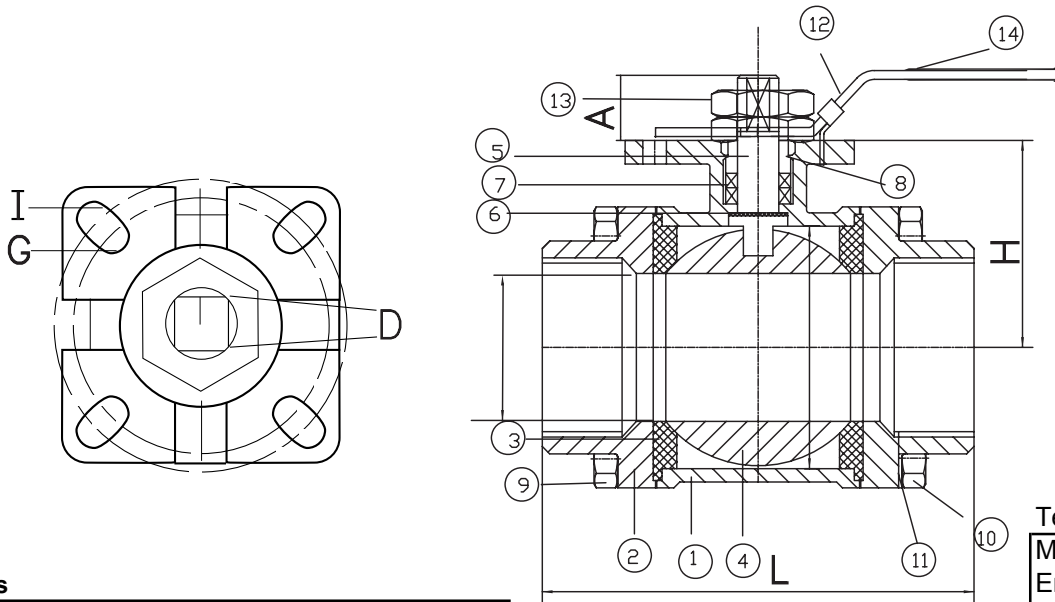


**Dimensions - ISO Mounting**

Size	1/4"	3/8"	1/2"	3/4"	1"	1 1/4"	1 1/2"	2"	2 1/2"	3"	4"
A	0.35	0.35	0.47	0.47	0.55	0.55	0.55	0.67	0.67	0.67	0.79
L	2.56	2.56	2.91	3.35	3.58	4.41	4.72	5.71	6.69	8.19	10.47
H	1.42	1.42	1.42	1.61	1.77	2.17	2.56	2.91	4.33	4.80	5.67
D	9mm	9mm	9mm	9mm	11mm	11mm	14mm	14mm	17mm	17mm	17mm
G	F03	F03	F03	F03	F04	F04	F05	F05	F07	F07	F07
I	F04	F04	F04	F04	F05	F05	F07	F07	F10	F10	F10



Testing  
MSS-SP72  
End Connection  
NACE MRO 175

**Materials**

1	Body	304SS/316SS/216WCB
2	End Caps	304SS/316SS/216WCB
3	Seats	RTFE/PTFE
4	Ball	304SS/316SS
5	Stem	304SS/316SS
6	Gasket	304SS
7	Seal	PTFE
8	Lever Nut	304SS
9	Bolts	304SS
10	Bolt Nuts	304SS
11	Spring Washer	304SS
12	Handle	304SS
13	Handle Nut	304SS
14	Handle Cover	Vinyl

**Torque in/lbs**

Size	1000lb
1/4"	27
3/8"	36
1/2"	54
3/4"	80
1"	124
1 1/4"	195
1 1/2"	284
2"	355
2 1/2"	532
3"	797
4"	1151

Size	Weight	Cv
1/4"	1	10
3/8"	1	18
1/2"	1.1	24
3/4"	1.98	55
1"	2.64	100
1 1/4"	3.96	160
1 1/2"	5.5	260
2"	8.8	450
2 1/2"	15.18	720
3"	25.96	1100
4"	50.82	2200

VALVE SIZE		DIMENSIONAL DATA SHEET		PART NO.	
PRESSURE RATING		<b>BALL VALVE</b> <b>SERIES 62</b> <b>SIZES 1/4" - 4"</b>		DRAWING NO.	
CUSTOMER/PROJECT				FL62-002	
INQ/PO NO.				REV	
ORDER NO.				A	
CERTIFIED BY      DATE				DATE	
		7/09			