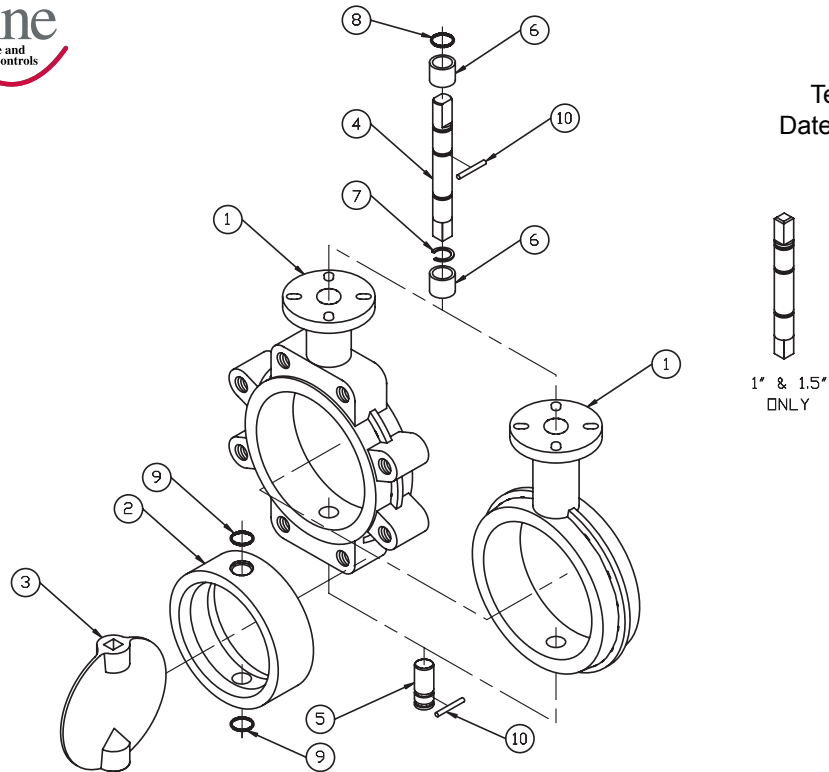




**Series 70/71**  
 Technical Drawing 70-005  
 Date: June 2009/Page 1 of 1



Item	Description	1"	1.5"	2"	2.5"	3"	4"	5"	6"	8"	10"	12"	
1	70 WAFER BODY	70-10001	70-10015	70-10002	70-10025	70-10003	70-10004	70-10005	70-10006	70-10008	70-10010	70-10012	
		<b>Cast Iron ASTM A120 Class 3</b>											
	70 WAFER BODY	70-20001	70-20015	70-20002	70-20025	70-20003	70-20004	70-20005	70-20006	70-20006	70-20008	70-20010	70-20012
		<b>Ductile Iron ASTM A536 (65-45-12)</b>											
	70 WAFER BODY	70-30001	70-30015	70-30002	70-30025	70-30003	70-30004	70-30005	70-30006	70-30006	70-30008	70-30010	70-30012
		<b>Ductile Iron ASTM A536 (60-40-18)</b>											
	71 LUG BODY	71-10001	71-10015	71-10002	71-10025	71-10003	71-10004	71-10005	71-10006	71-10006	71-10008	71-10010	71-10012
		<b>Cast Iron ASTM A120 Class 3</b>											
	71 LUG BODY	71-20001	71-20015	71-20002	71-20025	71-20003	71-20004	71-20005	71-20006	71-20006	71-20008	71-20010	71-20012
		<b>Ductile Iron ASTM A536 (65-45-12)</b>											
	71 LUG BODY	71-30001	71-30015	71-30002	71-30025	71-30003	71-30004	71-30005	71-30006	71-30006	71-30008	71-30010	71-30012
		<b>Ductile Iron ASTM A536 (60-40-18)</b>											
2	SEAT	70-71X01	70-71X15	70-71X02	70-71X25	70-71X03	70-71X04	70-71X05	70-71X06	70-71X08	70-71X10	70-71X12	
		<b>X =      6 = EPDM                      5 = BUNA N                      8 = WHITE BUNA                      0 = VITON</b>											
3	DISC	70-XXZ01	70-XXZ15	70-XXZ02	70-XXZ25	70-XXZ03	70-XXZ04	70-XXZ05	70-XXZ06	70-XXZ08	70-XXZ10	70-XXZ12	
		<b>X =      20 = FULL                      28 = MAX                      05 = UNDER</b> <b>Z =      1 = ELECTROLESS NICKEL PLATED DI      2 = ALUMINUM BRONZE      3 = NYLON 11      4 = STAINLESS STEEL</b>											
4	UPPER SHAFT	70-Z0X01	70-Z0X15	70-Z0X02	70-Z0X25	70-Z0X03	70-Z0X04	70-Z0X05	70-Z0X06	70-Z0X08	70-Z0X10	70-Z0X12	
		<b>X =      1 = STANDARD      2 = BRAY                      3 = KEYSTONE                      4 = WECO      5 = ISO</b> <b>Z =      3 = 316 STAINLESS STEEL                      4 = 416 STAINLESS STEEL      5 = PHOSPHATE COATED</b>											
5	LOWER SHAFT	70-Z1101	70-Z1115	70-Z1102	70-Z1125	70-Z1103	70-Z1104	70-Z1105	70-Z1106	70-Z1108	70-Z1110	70-Z1112	
		<b>Z =      3 = 316 STAINLESS STEEL                      4 = 416 STAINLESS STEEL      5 = PHOSPHATE COATED</b>											
6	BEARINGS	70-99201	70-99215	70-99202	70-99225	70-99203	70-99204	70-99205	70-99206	70-99208	70-99210	70-99212	
7	RETAINERS	70-99401	70-99415	70-99402	70-99425	70-99403	70-99404	70-99405	70-99406	70-99408	70-99410	70-99412	
8	TOP O-RING	70-91501	70-91515	70-91502	70-91525	70-91503	70-91504	70-91505	70-91506	70-91508	70-91510	70-91512	
9	BOTTOM O-RING	70-90501	70-90515	70-90502	70-90525	70-90503	70-90504	70-90505	70-90506	70-90508	70-90510	70-90512	
10	PIN	70-94001	70-94015	70-94002	70-94025	70-94003	70-94004	70-94005	70-94006	70-94008	70-94010	70-94012	

CUSTOMER/PROJECT	<b>DIMENSIONAL DATA SHEET</b> <b>EXPLODED VIEW 1" - 12"</b> <b>SERIES 70/71</b>	PART NO.	
INQ./PO NO.		DRAWING NO.	REV
ORDER NO.		70-005	A
CERTIFIED BY		DATE	6/09