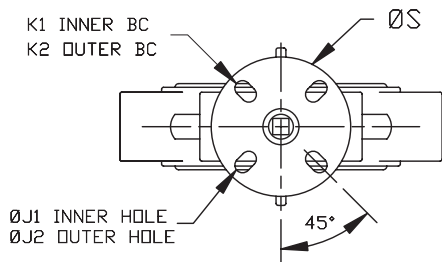
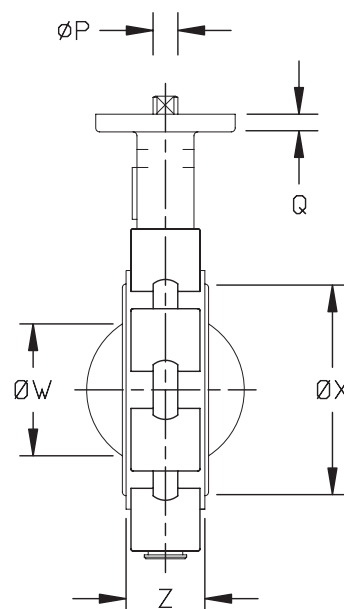
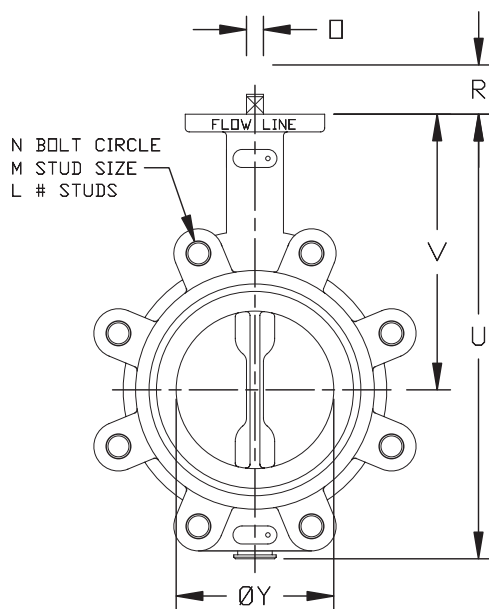


VALVE SIZE	Z	Y	X	W	V	U	S	R	Q	P	LUG DRILLING				TOP PLATE DRILLING				WGT. (LBS.)
											N	M	L	K1	K2	#holes	J1	J2	
2	1.66	2.01	3.00	1.24	5.62	8.44	4.00	.827	.44	.551	4.75	5/8-11	4	2.76	3.25	4	.39	.41	8
2½	1.76	2.47	3.50	1.82	6.12	9.19	4.00	.827	.44	.551	5.50	5/8-11	4	2.76	3.25	4	.39	.41	10
3	1.78	3.04	4.09	2.54	6.38	9.69	4.00	.827	.44	.551	6.00	5/8-11	4	2.76	3.25	4	.39	.41	11
4	2.05	4.00	5.31	3.54	7.12	11.00	4.00	.827	.44	.551	7.50	5/8-11	8	2.76	3.25	4	.39	.41	17
5	2.14	4.80	6.26	4.36	7.75	12.12	4.00	1.063	.44	.670	8.50	3/4-10	8	2.76	3.25	4	.39	.41	23
6	2.19	6.07	7.42	5.72	8.25	13.25	4.00	1.063	.44	.670	9.50	3/4-10	8	2.76	3.25	4	.39	.41	29
8	2.39	7.91	9.38	7.60	9.44	15.56	6.00	1.063	.56	.866	11.75	3/4-10	8	4.02	5.00	4	.59	.53	44
10	2.58	9.80	11.51	9.51	11.28	18.69	6.00	1.063	.56	.866	14.25	7/8-9	12	4.02	5.00	4	.59	.53	66
12	3.03	11.81	13.55	11.48	12.19	21.69	6.00	1.063	.56	.866	17.00	7/8-9	12	4.02	5.00	4	.59	.53	99



NOTE: W IS DISC CHORDAL DIMENSION AT VALVE FACE
ALL DIMENSIONS ARE INCHES

4	STEM		
3	DISC		
2	SEAT		
1	BODY		
ITEM	DESCRIPTION	MATERIAL	REMARKS



VALVE SIZE	FLANGE DRILLING	DIMENSIONAL DATA SHEET		PART NO.	
PRESSURE RATING		BUTTERFLY VALVE		DRAWING NO.	REV
CUSTOMER/PROJECT				73-001	B
INQ./PO NO.		SERIES 73		DATE	
ORDER NO.				6/09	
CERTIFIED BY	DATE	SIZES 2" - 12"			