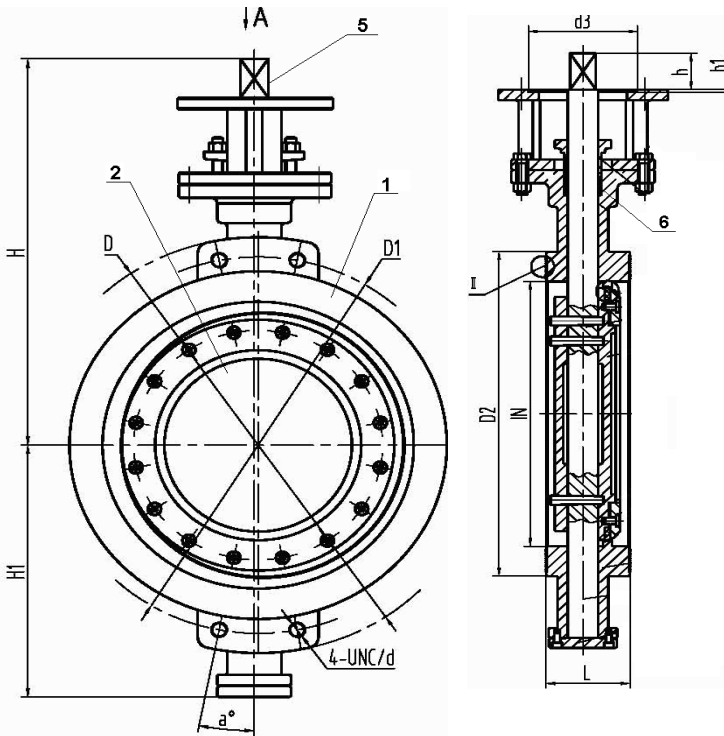
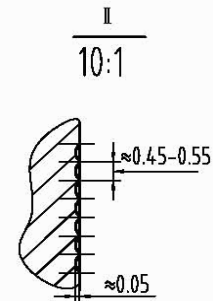
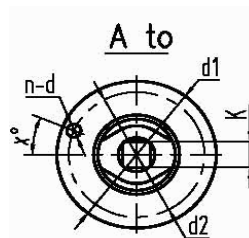
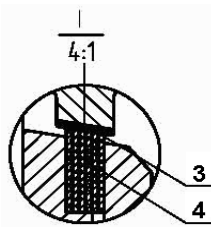


Size	L	D	D1	D2	4-UNC	H	H1	h	K	ISO5211	d1	d2	d3	h1
2"	1.69	5.98	4.74	3.62	4-Ø.71	8.58	4.25	1.77	14mm	F07	3.54	2.76	2.17	0.12
2.5"	1.81	7.01	5.49	4.13	4-Ø.71	8.98	4.65	1.77	14mm	F07	3.54	2.76	2.17	0.12
3"	1.89	7.48	6	5	4-Ø.71	9.29	4.96	1.77	14mm	F07	3.54	2.76	2.17	0.12
4"	2.13	9.02	7.5	6.18	4-Ø.71	11.22	4.82	1.77	14mm	F07	3.54	2.76	2.17	0.12
5"	2.2	10	8.5	7.32	4-Ø.87	13.46	5.51	2.56	19mm	F10	4.92	4.02	2.76	0.12
6"	2.24	10.98	9.51	8.5	4-Ø.87	14.06	6.1	2.56	19mm	F10	4.92	4.02	2.76	0.12
8"	2.52	13.5	11.75	10.63	4-Ø.87	16.93	7.28	3.35	27mm	F12/F10	5.91	4.92/4.02	-	-
10"	2.8	15.98	14.25	12.76	4-7/8"-9UNC	18.15	10.75	3.35	27mm	F12/F10	5.91	4.92/4.02	-	-
12"	3.19	19.02	17.01	15	4-7/8"-9UNC	20.87	12.13	4.33	36mm	F16/F12	8.27	6.5/4.92	-	-



No.	Item	Material	Optional
1	Body	WCB/316SS/304SS	Duplex
2	Disc	316SS/304SS	Stellite/Duplex
3	Seat	.13Cr	Stellite
4	Seat Ring	316SS+Graphoil	Stellite+Graphoil/ 304SS+Graphoil/ .13Cr+Graphoil
5	Shaft	17-4PhSS	316SS/Monel
6	Packing	Graphoil	Consult Factory
7	Bearings	SS+Nitrate	Consult Factory

Design	API 607 6th Edition		
Flange	ANSI B16.5		
Test	API 598		
Torque In-lbs			
2"	310	6"	2567
2.5"	425	8"	5134
3"	690	10"	7966
4"	1080	12"	12922
5"	1655		



VALVE	Wafer Torque Seated
PRESSURE RATING	ANSI 150
CUSTOMER/PROJECT	
SPECIFICATION	API 607 6th Edition
CERTIFIED BY	J.D.

DIMENSIONAL DATA SHEET
Series 78
Wafer Torque Seated Triple Offset Butterfly Valve
Size 2"----12"

PART NO.	
DRAWING NO. FL78-1150	REV A
DATE 12/15/2011	