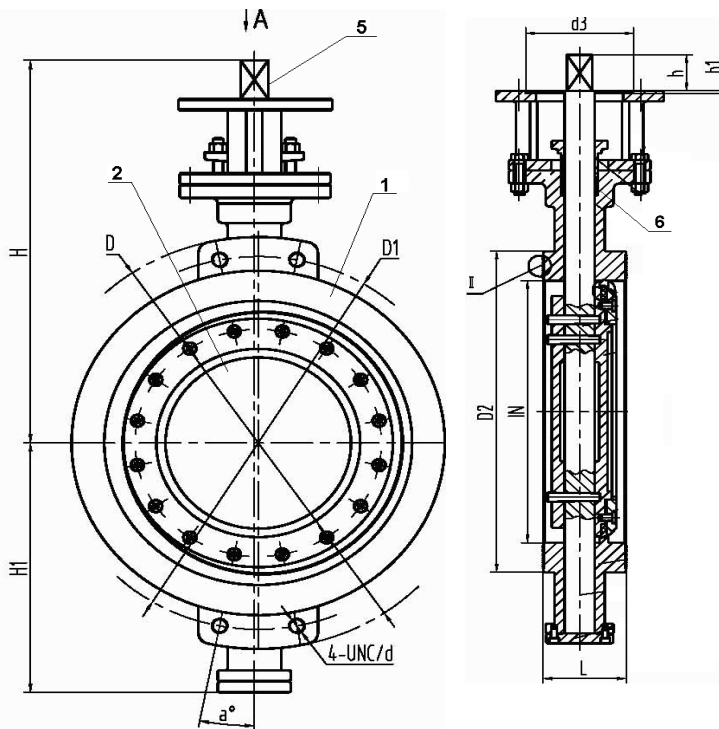
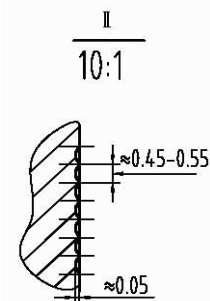
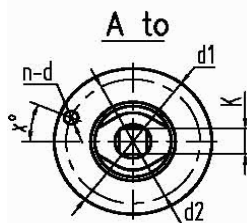
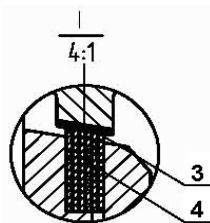


Size	L	D	D1	D2	4-UNC	H	H1	h	K	ISO5211	d1	d2	d3	h1
8"	4.02	16.50	13.75	10.63	4-1 1/8"-8UNC	28.15	9.29	4.33±.39	1.42	F25	11.81	10.00	7.87	0.20
10"	4.61	20.00	17.00	12.76	4-1 1/4"-8UNC	30.12	11.02	4.33±.39	1.42	F25	11.81	10.00	7.87	0.20
12"	5.51	22.01	19.25	15.00	4-1 1/4"-8UNC	34.25	12.13	4.72±.39	1.81	F25	11.81	10.00	7.87	0.20
14"	6.10	23.78	20.75	16.26	4-1 5/8"-8UNC	36.22	12.99	6.30±.39	2.17	F25	11.81	10.00	7.87	0.20
16"	7.01	27.01	23.75	18.50	4-1 5/8"-8UNC	38.19	14.61	6.30±.39	2.17	F25	11.81	10.00	7.87	0.20
18"	7.87	29.25	25.75	20.98	4-1 5/8"-8UNC	40.55	15.87	6.69±.39	2.17	F25	11.81	10.00	7.87	0.20
20"	8.50	32.01	28.50	22.99	4-1 5/8"-8UNC	42.52	17.40	6.69±.39	2.95	F30	13.78	11.73	9.06	0.20
24"	9.13	37.01	33.00	27.24	4-1 7/8"-8UNC	44.49	19.88	7.48±.39	2.95	F35	16.34	14.02	10.24	0.20



No.	Item	Material	Optional
1	Body	WCB/316SS/304SS	Duplex
2	Disc	316SS/304SS	Stellite/Duplex
3	Seat	.13Cr	Stellite
4	Seat Ring	316SS+Graphoil	Stellite+Graphoil/ 304SS+Graphoil/ .13Cr+Graphoil
5	Shaft	17-4PhSS	316SS/Monel
6	Packing	Graphoil	Consult Factory
7	Bearings	SS+Nitrate	Consult Factory

Design	API 607 6th Edition		
Flange	ANSI B16.5		
Test	API 598		
Torque In-lbs			
8"	47795	16"	167921
10"	61603	18"	270291
12"	74348	20"	403606
14"	100759	24"	584166



VALVE	Wafer Triple Offset
PRESSURE RATING	ANSI 600
CUSTOMER/PROJECT	
SPECIFICATION	API 607 6th Edition
CERTIFIED BY	J.D. & T.Z.

DIMENSIONAL DATA SHEET

Series 78

Wafer Torque Seated Triple Offset Butterfly Valve

Size 8"----24"

PART NO.	
DRAWING NO. FL78-1600	REV B
DATE 1/31/2013	