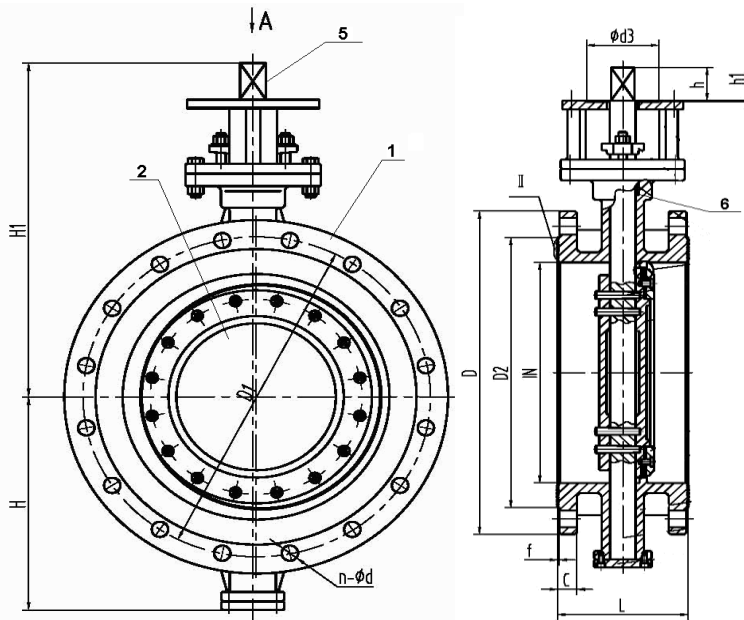
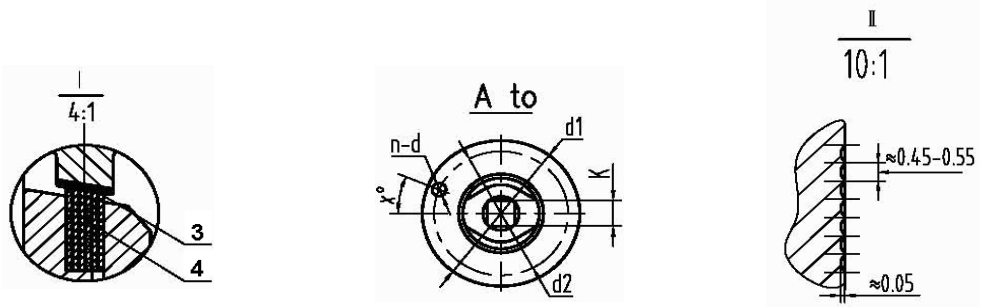


Size	L	D	D1	D2	n-Ød	H	H1	h	K	ISO5211	d1	d2	d3	h1
4"	5	10.04	7.87	6.18	8-Ø22	4.82	11.22	3.35	22mm	F12	5.91	4.92	3.35	0.12
5"	5.51	11.02	9.25	7.32	8-Ø22	5.51	13.46	3.35	22mm	F12	5.91	4.92	3.35	0.12
6"	5.51	12.6	10.63	8.5	12-Ø22	7.28	14.06	4.33	27mm	F16	8.27	6.5	5.12	0.2
8"	5.98	14.96	13	10.63	12-Ø26	10.75	16.93	4.33	27mm	F16	8.27	6.5	5.12	0.2
10"	9.84	17.52	15.25	12.76	16-Ø30	12.13	18.15	4.33	36mm	F16	8.27	6.5	5.12	0.2
12"	10.63	20.47	17.75	15	16-Ø33	12.52	20.87	4.33	36mm	F16	8.27	6.5	5.12	0.2



No.	Item	Material	Optional
1	Body	WCB/316SS/304SS	Duplex
2	Disc	316SS/304SS	Stellite/Duplex
3	Seat	.13Cr	Stellite
4	Seat Ring	316SS+Graphoil	Stellite+Graphoil/ 304SS+Graphoil/ .13Cr+Graphoil
5	Shaft	17-4PhSS	316SS/Monel
6	Packing	Graphoil	Consult Factory
7	Bearings	SS+Nitrate	Consult Factory

Design	API 607 6th Edition		
Flange	ANSI B16.5		
Test	API 598		
Torque In-lbs			
4"	2089	8"	10179
5"	3399	10"	17313
6"	4691	12"	25978



VALVE	Flanged Torque Seated Triple Offset
PRESSURE RATING	ANSI 300
CUSTOMER/PROJECT	
SPECIFICATION	API 607 6th Edition
CERTIFIED BY	J.D.

DIMENSIONAL DATA SHEET
Series 78
Flanged Torque Seated Triple Offset Butterfly Valve
Size 4"----12"

PART NO.	
DRAWING NO. FL78-3300	REV A
DATE 12/15/2011	