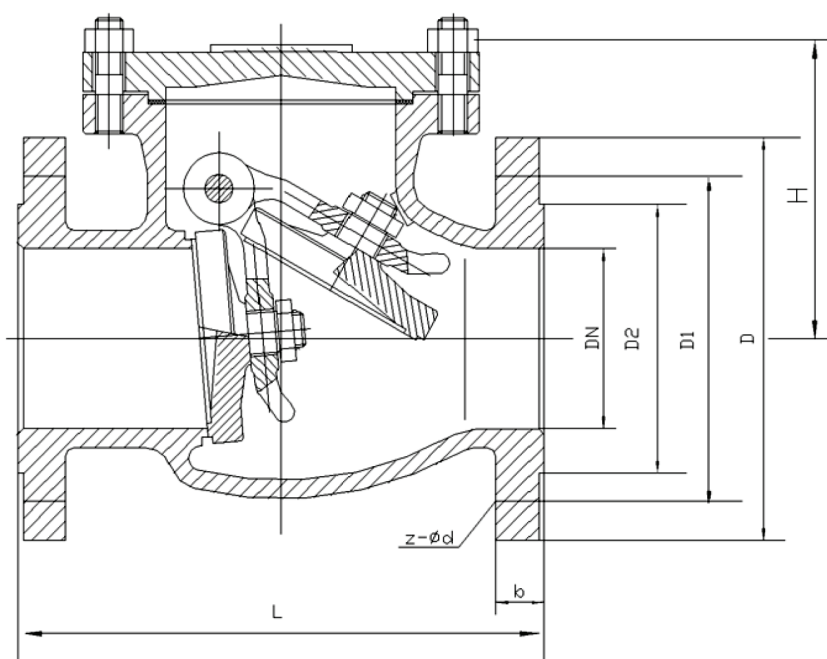


Size	2	2.5	3	4	5	6	8	10	12
L	7.99	8.5	9.49	11.5	12.99	14.02	19.49	24.49	27.48
D2	3.62	4.13	5	6.18	7.32	8.5	10.63	12.76	15
D1	4.74	5.49	6	7.48	8.5	9.51	11.75	14.25	17.01
D	5.98	7.01	7.48	9.02	10	10.98	13.5	15.98	19.02
Z-Ød	4-.75	4-.75	4-.75	4-.75	8-.87	8-.87	12-.98	12-.98	12-.98
b	0.63	0.71	0.75	0.94	0.94	1.02	1.14	1.22	1.26
H	6.5	6.89	7.48	8.46	9.45	10.43	12.6	14.37	16.34



Face to Face	ANSI B16.10
Flange Dimension	ANSI B16.5
Test	API 598
Pressure	ANSI B16.34
Marking	MSS-SP-25

Size Weight/lb

2"	38
2.5"	51
3"	73
4"	97
5"	121
6"	172
8"	302
10"	456
12"	614

Testing API 598

Shell	Hydro	450psi
Seat	Air	80psi
Back Seat	Hydro	315psi

Components / Materials

1	Body	WCB+D507	10	Cap	WCB
2	Disc	WCB+D507	11	Stem Nuts	Copper Alloy
3	Stem	2Cr13	12	Handle	KTH330
4	Washer	304SS	13	Nuts	25#
5	Cap	WCB	14	Pin	2Cr13
6	Nuts	25#	15	Spindle	35#
7	Bolts	35#	16	Bolts	35#
8	Stuffing	CrSS	17	Nuts	25#
9	Sealing	Graphite			

Pressure / Temperature Ratings

Temp °F	WCB	Temp °F	WCB
-20 to 100	285	700	110
200	260	750	95
300	230	800	80
400	200	850	65
500	170	900	50
600	140	950	35
650	125	1000	20

VALVE SIZE	FLANGE DRILLING	DIMENSIONAL DATA SHEET		PART NO.	
PRESSURE RATING		CAST STEEL CHECK VALVES		DRAWING NO.	REV
CUSTOMER/PROJECT		SERIES 45		FL45-001	A
INQ/PO NO.		SIZES 2"-12"		DATE	
ORDER NO.				4/30/09	
CERTIFIED BY	DATE				